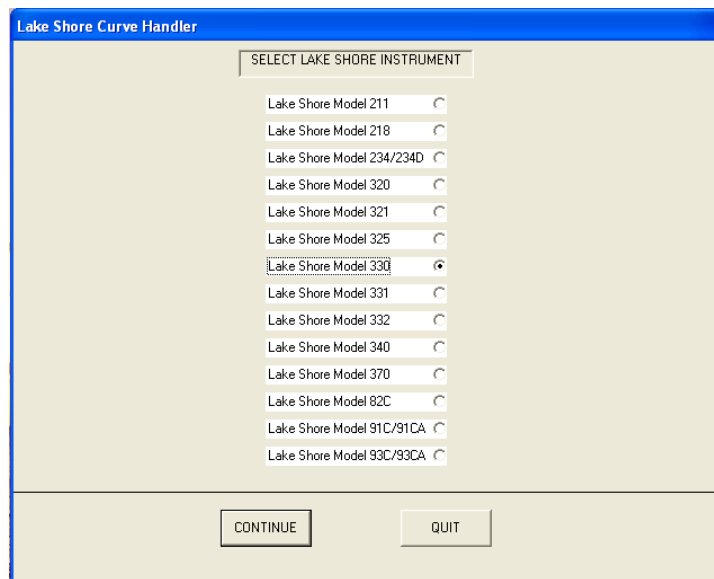


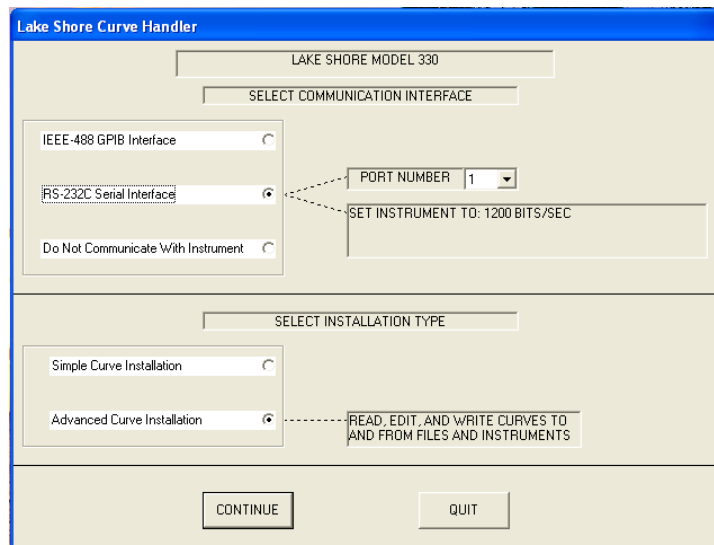
Curve Handler Basic Operation

Read, Write and Modify Curve Files

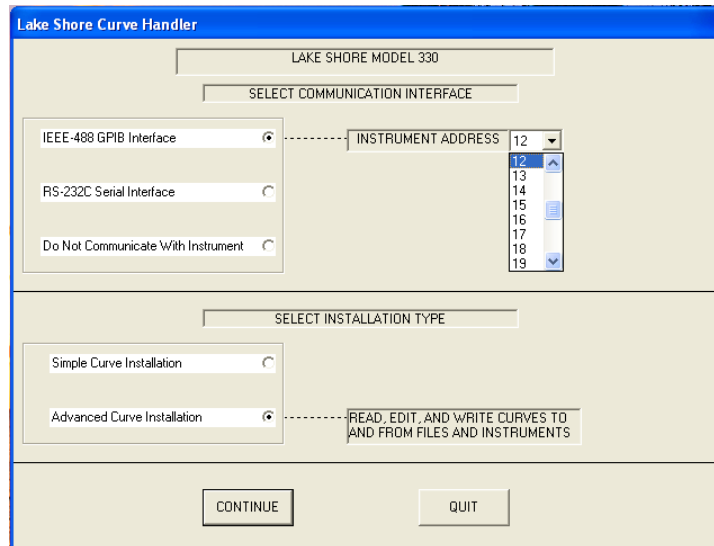
1. Start the Curve Handler application, select the appropriate instrument, then click **Continue**.



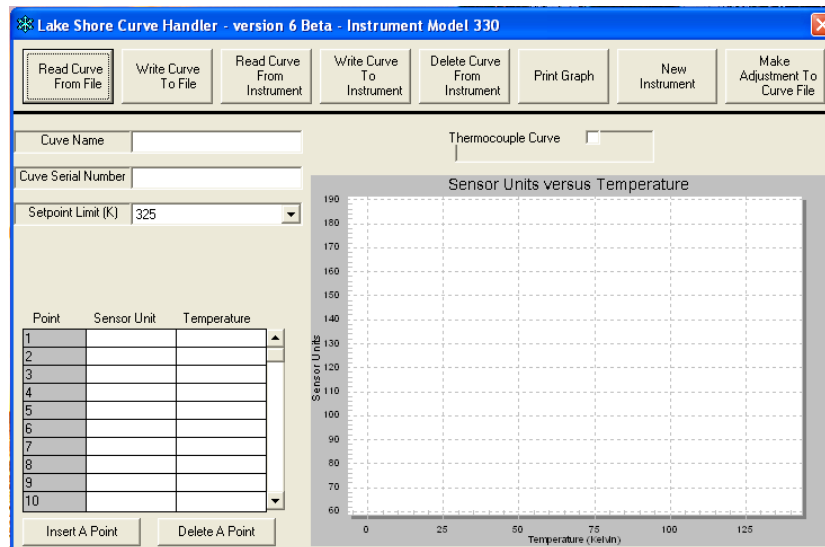
2. If you are not connected to an instrument, select **Do Not Communicate With Instrument**.
3. If you will be using the RS232 interface, set the instrument RS232 baud rate as directed, select **Advanced Curve Installation**, and then click **Continue**:



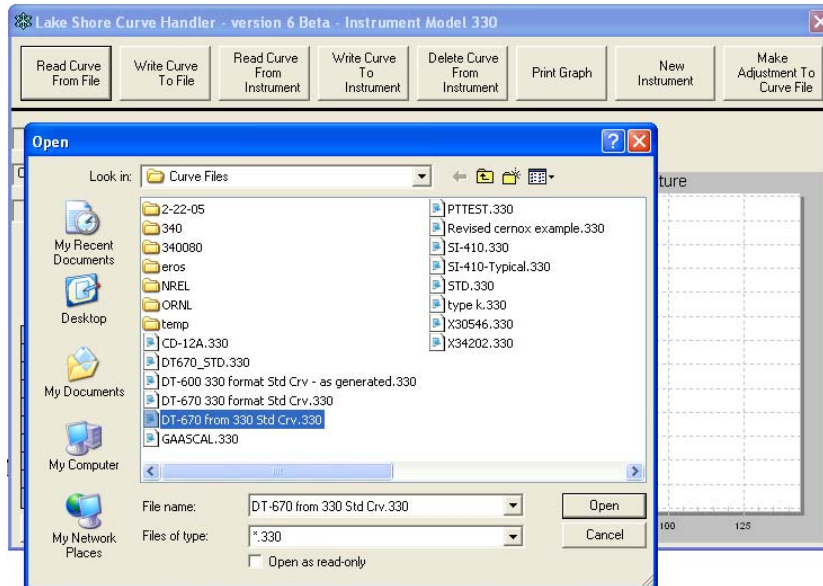
- If you will be using the GPIB interface, set the Curve Handler's GPIB address to match the GPIB address of the instrument you are working with, select **Advanced Curve Installation**, and then click **Continue**.



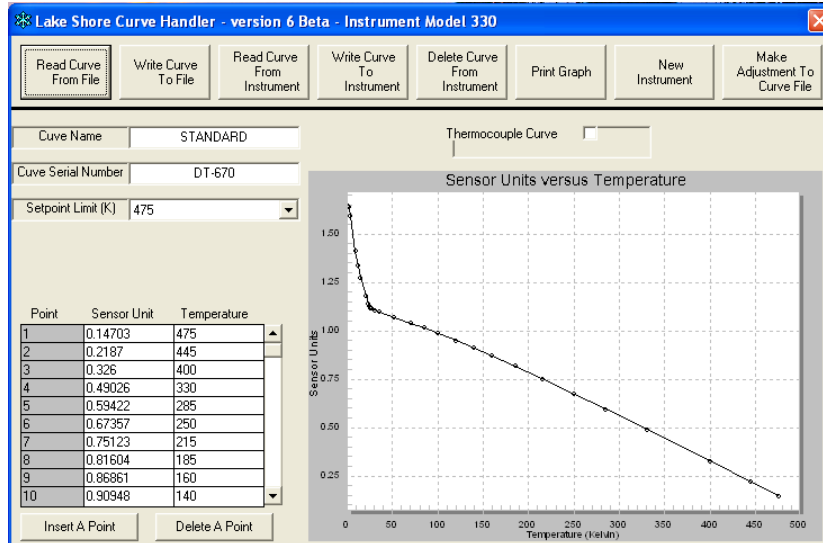
- To load a curve from a file, click on the **Read Curve From File** button.



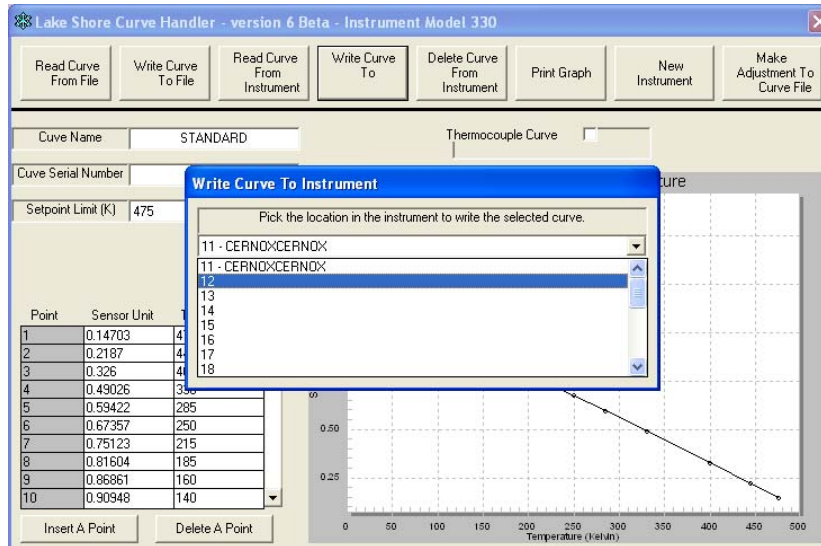
- The **Open File** window will display only the files with the correct extension for the instrument selected. Locate the file and then click **Open**.



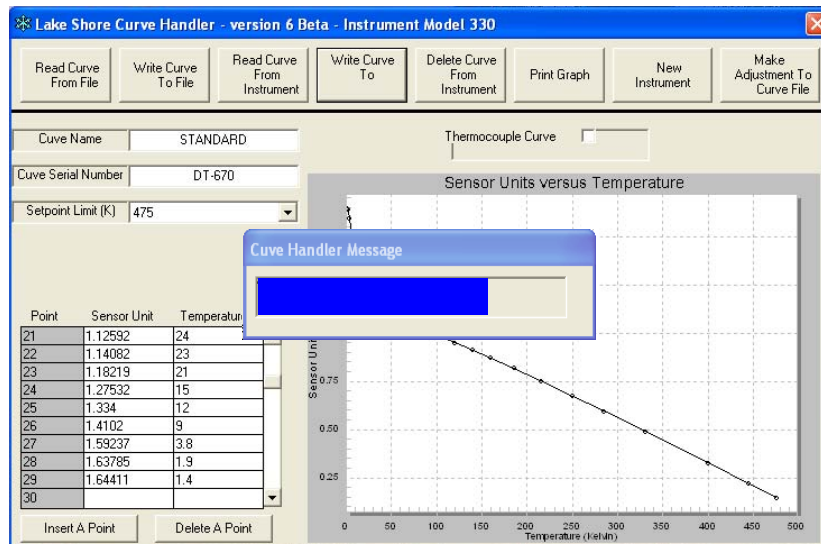
- The curve header, data points, and graph will populate.



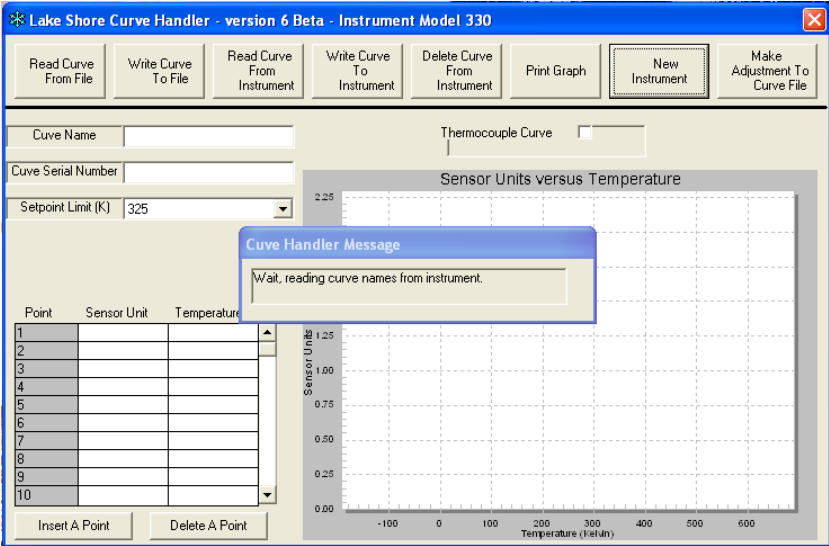
- To write the curve to an instrument, click on the **Write Curve To Instrument** button, select the location where you want the curve to be written from the drop down box, and then click **OK**.



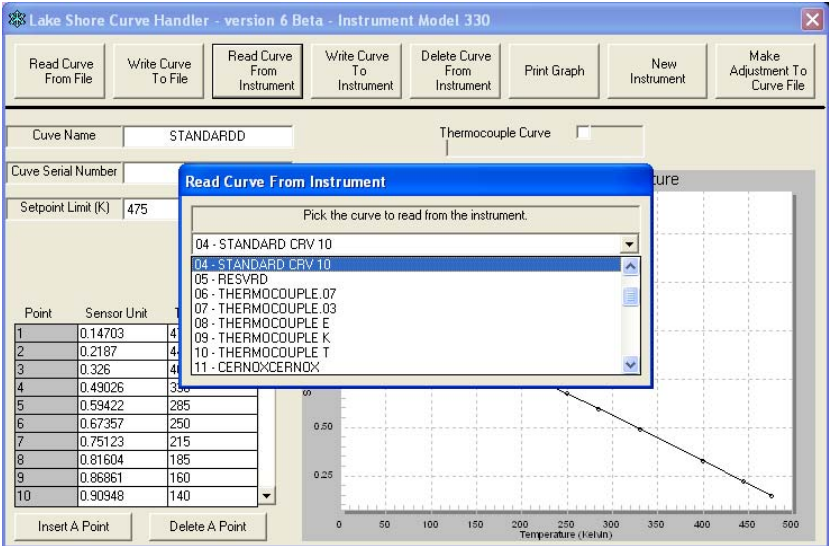
- The curve will be written to the location selected and you will see a progress indicator until the write process is completed.



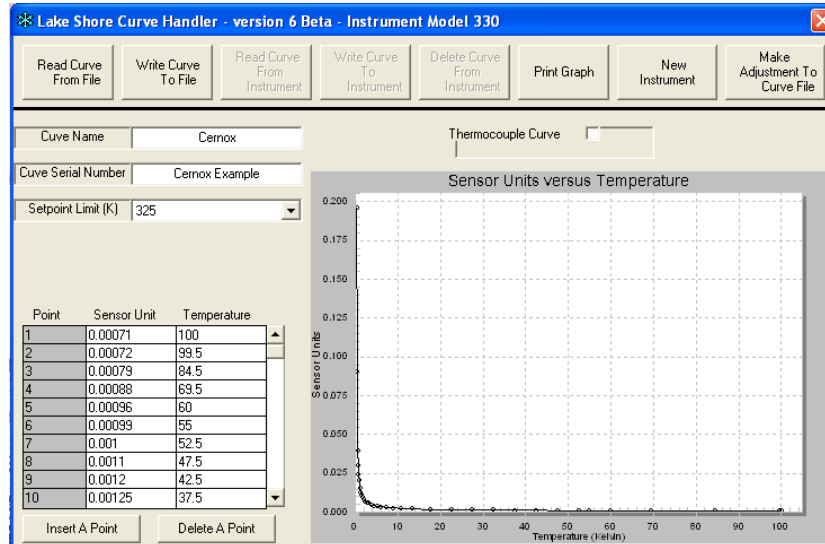
10. To verify that the curve has been written to the instrument, you must first reconnect Curve Handler to the instrument. Click on the **Connect To New Instrument** button, select the instrument type and interface plus advanced curve installation. Curve Handler will read the curves that are installed on the instrument into the application during this start-up process.



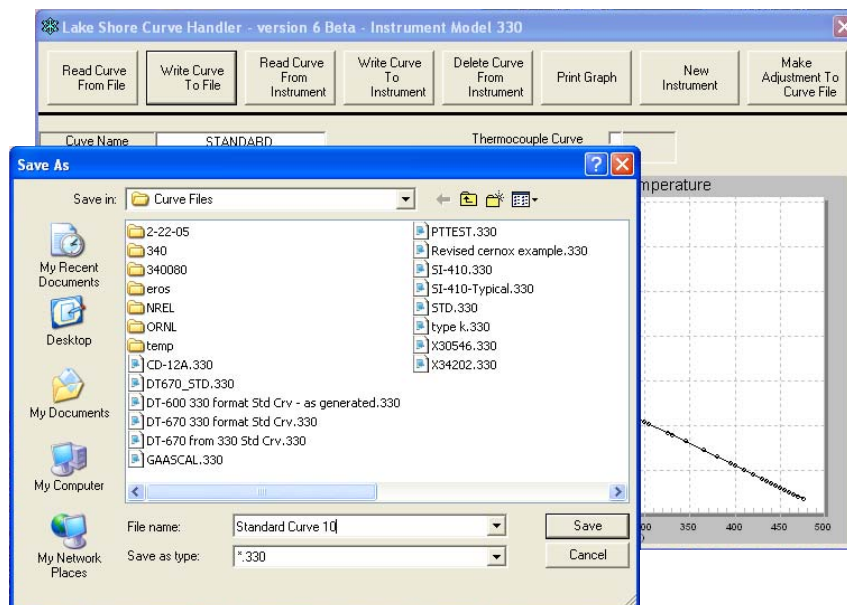
11. To verify that the curve was written correctly or to read a curve that is stored in the instrument select the **Read Curve From Instrument** button. Choose the curve to be read from the drop down box then click **OK**.



- To build the new curve, enter the curve header and point information in the fields provided. To modify an existing curve, read the curve from a file and modify the sensor units or temperature accordingly.



- You will see the curve graph develop as you enter the data points. Once all points have been entered, you can write the file to the instrument (if you are connected) or save the curve to a file until you have the instrument connected.
- To save a newly entered curve or save a curve read from an instrument, select the **Write Curve To File** button. Name the file and save it to your selected location.



15. To exit from Curve Handler, click on the × in the upper right of the window