

# Cryostat Sample Holders

A wide range of sample holders is available, in both standard and custom designs.

## Blank sample holder

*Standard in-stock*

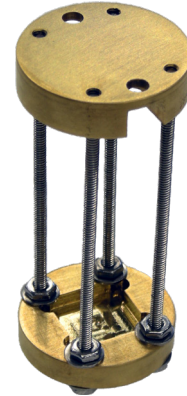
Standard sample holder.



## Cuvette sample holder

*Custom*

Suitable for holding commercial cuvettes. Only for use in sample in exchange gas systems.



## Optical sample holder

*Standard in-stock*

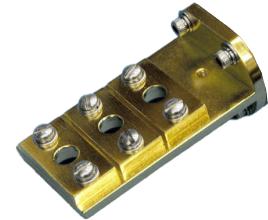
Center hole to accommodate optical measurements.



## 3-position sample holder

*Custom*

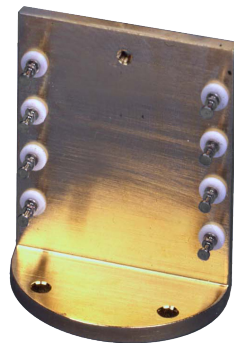
Usually used in an FTIR system.



## Resistivity sample holder

*Standard in-stock*

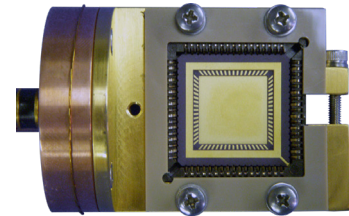
Eight posts for sample and instrumentation connections for electrical measurements.



## Leadless chip carrier sample holder

*Custom*

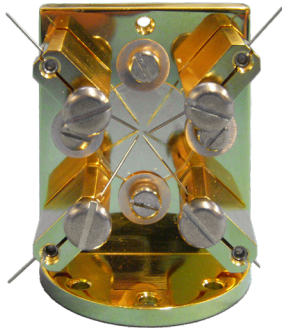
Sample holder for LCC chips, typically used in sample-in-vapor systems.



## Fixed-probe sample holder

*Standard in-stock*

Fixed-position tungsten probes for electrical measurement without the need for permanent contacts.



## ST-500 standard sample holder

*Standard*

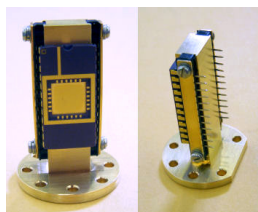
Sample holder for ST-500 cryostats with customer-specified distance from the cryostat window.



## Dual inline pin socket sample holder

*Custom*

DIP socket sample holder, typically used in sample-in-vapor systems.



## ST-500 20-pin PCB sample holder

*Custom*

Special low-profile 20-pin PCB sample holder for electrical measurements in ST-500 cryostats.

