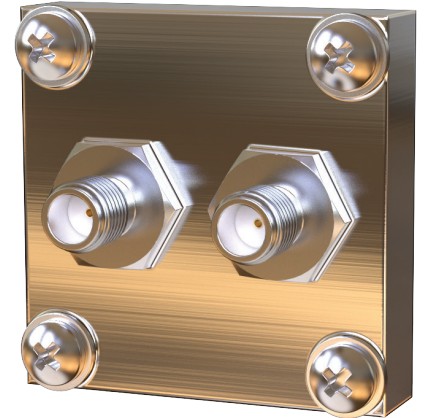


# Cryostat Feedthroughs and Wiring

All options fit a standard 1.375 in square o-ring sealed feedthrough port unless noted.

## Hermetic feedthroughs — unwired

10P-ASSEMBLY	10-pin feedthrough with mating connector
10PIN	10-pin UHV feedthrough, mini-ConFlat mounted with mating connector (fits UHV cryostats only)
10PIN-NM	Non-magnetic 10-pin feedthrough with mating connector
19P-ASSEMBLY	19-pin feedthrough with mating connector
26P-ASSEMBLY	26-pin feedthrough with mating connector
32P-ASSEMBLY	32-pin feedthrough with mating connector
45853	Thermocouple feedthrough (including support clamp)
EF-4-BNC-2-TRX-G	Breakout box with 4 jack-to-jack BNC feedthroughs and 2 jack-to-jack triaxial feedthroughs — grounded flange
EF-4-BNC-2-TRX-I	Breakout box with 4 jack-to-jack BNC feedthroughs and 2 jack-to-jack triaxial feedthroughs — insulated flange
EF-COMPR-SEAL	1/16 in o-ring compression seal installed on feedthrough flange
EF-BNC-1-B-AL	Single BNC feedthrough, jack-to-jack — grounded flange
EF-BNC-1-B-NC	Single BNC feedthrough, jack-to-jack — insulated flange
EF-BNC-2-S-AL	Double BNC feedthrough, solder connection — grounded flange
EF-BNC-2-S-NC	Double BNC feedthrough, solder connection — insulated flange
EF-BNC-6-G	Breakout box with 6 jack-to-jack BNC feedthroughs — grounded flange
EF-BNC-6-I	Breakout box with 6 jack-to-jack BNC feedthroughs — insulated flange
EF-SMA-2-B-AL	Double SMA feedthrough, jack-to-jack — grounded flange
EF-SMA-2-B-NC	Double SMA feedthrough, jack-to-jack — insulated flange
EF-SMA-6-G	Breakout box with 6 jack-to-jack SMA feedthroughs — grounded flange
EF-SMA-6-I	Breakout box with 6 jack-to-jack SMA feedthroughs — insulated flange
EF-TRIAx-1-B-AL	Single triaxial feedthrough, jack-to-jack — grounded flange
EF-TRIAx-1-B-NC	Single triaxial feedthrough, jack-to-jack — insulated flange
EF-TRIAx-6-G	Breakout box with 6 jack-to-jack triaxial feedthroughs — grounded flange
EF-TRIAx-6-I	Breakout box with 6 jack-to-jack triaxial feedthroughs — insulated flange



Double SMA feedthrough



Double BNC feedthrough



6-connector breakout box

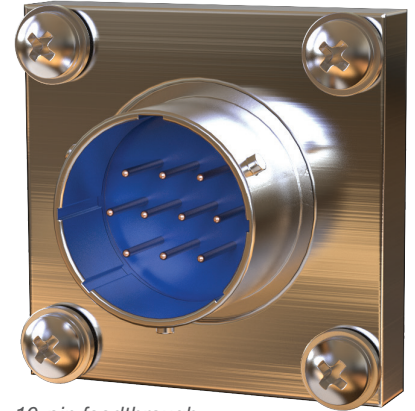
# Cryostat Feedthroughs and Wiring

All options fit a standard 1.375 in square o-ring sealed feedthrough port unless noted.  
All wiring is loose in the sample area unless otherwise stated.

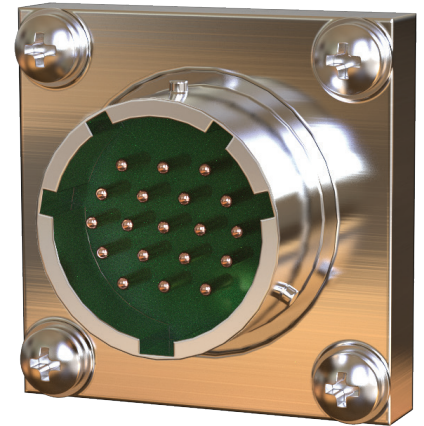
## Hermetic feedthroughs with installed wiring

Please note that compact cryostats, including the ST-500 Series, have limited internal space and cannot accommodate bulkier wiring. Contact Sales for more details.

WH-10P	10-pin feedthrough with 10 PhBr twisted-pair wires installed; includes mating connector
WH-10P-8RES	10-pin feedthrough with 8 PhBr twisted-pair wires installed, configured for use with an 8-pin resistivity sample holder; includes 2 4-pin mini-connectors and mating connector
WH-10P-FP	10-pin feedthrough with 4 PhBr twisted-pair wires installed, configured for use with a 500 K fixed-probe sample holder
WH-10P-FP-H	10-pin feedthrough with 4 Cu wires installed, configured for use with an 800 K fixed-probe sample holder
WH-19P	19-pin feedthrough with 18 PhBr twisted-pair wires installed; includes mating connector
WH-26P	26-pin feedthrough with 26 PhBr twisted-pair wires installed; includes mating connector
WH-32P	32-pin feedthrough with 32 PhBr twisted-pair wires installed; includes mating connector
WH-4-BNC-2-TRX-G	Breakout box with 4 jack-to-jack BNC feedthroughs with 4 coaxial cables installed and 2 jack-to-jack triaxial feedthroughs with 2 triaxial cables installed — grounded flange/outer shields
WH-4-BNC-2-TRX-I	Breakout box with 4 jack-to-jack BNC feedthroughs with 4 coaxial cables installed and 2 jack-to-jack triaxial feedthroughs with 2 triaxial cables installed — insulated flange/floating shields
WH-BNC-1-G	Single BNC feedthrough with 1 jack-to-jack BNC feedthrough and 1 coaxial cable installed — grounded flange and shield
WH-BNC-1-NC	Single BNC feedthrough with 1 jack-to-jack BNC feedthrough and 1 coaxial cable installed — insulated flange/floating shield
WH-BNC-2-G	Double BNC feedthrough with two solder-cup BNC feedthroughs and two coaxial cables installed — grounded flange and shields
WH-BNC-2-G-FP	2 double BNC feedthroughs with 4 coaxial cables installed, configured for use with a 500 K fixed-probe sample holder — grounded flange and shield
WH-BNC-2-G-FP-H	2 double BNC feedthroughs with 4 copper wires installed, configured for use with an 800 K fixed-probe sample holder — grounded flange
WH-BNC-2-NC	Double BNC feedthrough with two solder-cup BNC feedthroughs and two coaxial cables installed — insulated flange/floating shields
WH-BNC-2-NC-FP	2 double BNC feedthroughs with 4 coaxial cables installed, configured for use with a 500 K fixed-probe sample holder — insulated flange/floating shields
WH-BNC-2-NC-FP-H	2 double BNC feedthroughs with 4 copper wires installed, configured for use with an 800 K fixed-probe sample holder — insulated flange
WH-BNC-6-G	Breakout box with 6 jack-to-jack BNC feedthroughs and 6 coaxial cables installed — grounded flange and shields
WH-BNC-6-I	Breakout box with 6 jack-to-jack BNC feedthroughs and 6 coaxial cables installed — insulated flange/floating shields
WH-SMA-2-G	Double SMA feedthrough with two jack-to-jack SMA feedthroughs and two coaxial cables installed — grounded flange and shields
WH-SMA-2-NC	Double SMA feedthrough with two jack-to-jack SMA feedthroughs and two coaxial cables installed — insulated flange/floating shields
WH-SMA-6-G	Breakout box with 6 jack-to-jack SMA feedthroughs and 6 coaxial cables installed — grounded flange and shields
WH-SMA-6-I	Breakout box with 6 jack-to-jack SMA feedthroughs and 6 coaxial cables installed — insulated flange/floating shields
WH-TRIAx-1-G	Single triaxial feedthrough with 1 jack-to-jack triaxial feedthrough and 1 triaxial cable installed — grounded flange and shields
WH-TRIAx-1-NC	Single triaxial feedthrough with 1 jack-to-jack triaxial feedthrough and 1 triaxial cable installed — insulated flange/floating shields
WH-TRIAx-6-G	Breakout box with 6 jack-to-jack triaxial feedthroughs and 6 triaxial cables installed — grounded flange and shields
WH-TRIAx-6-I	Breakout box with six jack-to-jack triaxial feedthroughs and six triaxial cables installed — insulated flange/floating shields



10-pin feedthrough



19-pin feedthrough